



Specialty Truck Products

LIGHTING, STAINLESS STEEL AND CHROME CATALOG

Version 3.0



Table of Contents

LIGHTING & ACCESSORIES

LED Lights	3
Marker and Stop Lights	12
Headlights	13
Work and Fog Lights	22
Emergency Warning Lights	26
Lighting Accessories	30

INTERIOR ACCESSORIES

Wood Steering Wheels	36
Gear Shift Covers	40

ANTENNAS

CB Antennas	41
-------------------	----

WHEEL ACCESSORIES

ABS Wheel Covers & Accessories	42
Chrome Wheel Covers & Accessories	46
Stainless Steel Wheel Covers	51

MIRRORS & ACCESSORIES

Spot Mirrors	52
Door Mount Mirrors	55
Hood Mount Mirrors	59
Bolt-On Covers	61

COLLISION BODY PARTS

Headlight Covers	63
Grilles Aftermarket	66

Accessories & Parts for Grilles	70
---------------------------------------	----

CHASSIS ACCESSORIES

Mud Flap Hangers	72
Mud Flap Accessories	74
Quarter Fenders	76
Light L-Brackets	78
Rear Light Panels	79

EXHAUST PRODUCTS

Mufflers & Resonators	84
Clamps, Flat U-bolts & Flat Bands	85
Stacks	86

CLEANING SUPPLIES

Cleaning Supplies	88
-------------------------	----

USA STAR Truck Products, is not responsible for typographical or photographic errors. Manufacturer's part numbers are for identification purposes only. There is no intent to represent these parts as made by these manufacturers. Any reference to OEM product identification numbers, descriptions, model numbers is for identification purposes only and does not indicate that it is an OEM item. When ordering, customers have the option to order using industry references, or USA STAR item references.





MiamiStar.net
 9795 N.W. 87TH Ave. Medley, FL 33178. USA.
 PH: 1 (305) 888.8669

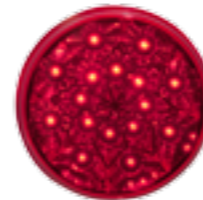
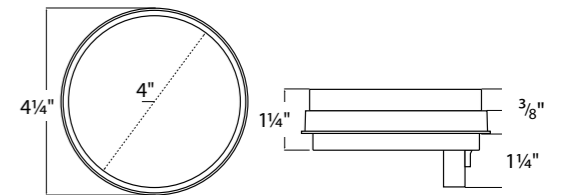
Authorized Distributors



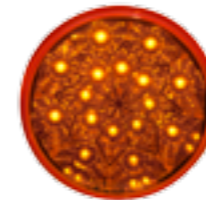
12v: US01-42162
 24v: US01-44162

**Star Design Lighting Series
 4" Round 16 LED STT Light**

- 4" Round LED sonically sealed light
- 16 LED (amber, red, white or blue)
- Poly-Carbonate lens (clear or colored)
- Marker/Turn lamp
- 12v standard and 24v special order
- Uses standard 3-prong connection
- Meets or exceeds D.O.T standard



12v: US01-42161
 24v: US01-44161



12v: US01-42163
 24v: US01-44163



12v: US01-42164
 24v: US01-44164



12v: US01-42160
 24v: US01-44160



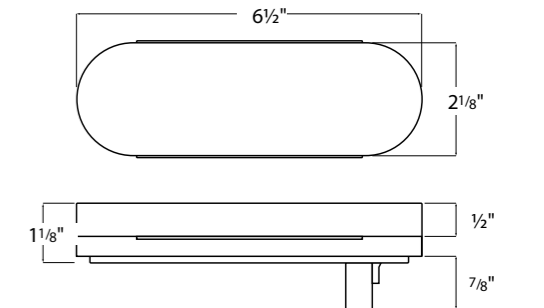
12v: US01-42167
 24v: US01-44167



12v: US01-62162
 24v: US01-64162

**Star Design Lighting Series
 6" Oval 16 LED STT Light**

- 6" Oval LED sonically sealed light
- 16 LED (amber, red, white or blue)
- Poly-Carbonate lens (clear or colored)
- Marker/Turn lamp
- 12v standard and 24v special order
- Uses standard 3-prong connection
- Meets or exceeds D.O.T standard



12v: US01-62161
 24v: US01-64161



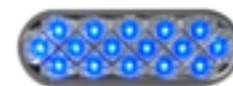
12v: US01-62163
 24v: US01-64163



12v: US01-62164
 24v: US01-64164



12v: US01-62160
 24v: US01-64160



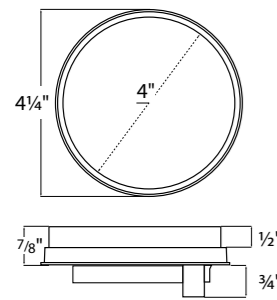
12v: US01-62167
 24v: US01-64167



All parts supplied are USA STAR. Use of other manufacturer's names, part numbers, or trademarks are for informational and identification purposes only.



12v: US01-42212
24v: US01-44212



12v: US01-42214
24v: US01-44214



12v: US01-42217

**Blu Design Lighting Series
4" Round 24 LED STT Light**

- 4" Round LED sonically sealed light
- 24 LED (amber, red, white or blue)
- Poly-Carbonate lens (clear or colored)
- Marker/Turn lamp
- 12v standard and 24v special order
- Uses standard 3-prong connection
- Meets or exceeds D.O.T standard



12v: US01-42211
24v: US01-44211



12v: US01-42213
24v: US01-44213



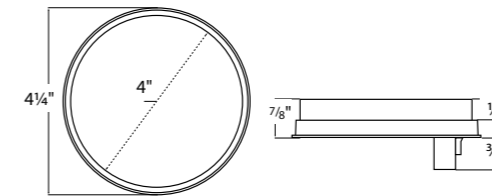
12v: US01-42218



12v: US01-42210



US01-40172



**Fleet Design Lighting Series
4" Round 10 LED STT Light**

- 4" Round LED sonically sealed light
- 10 LED (amber, red or white)
- Poly-Carbonate lens (clear or colored)
- Marker/Turn lamp
- Voltage: 12v
- Uses standard 3-prong connection
- Meets or exceeds D.O.T standard



US01-40171



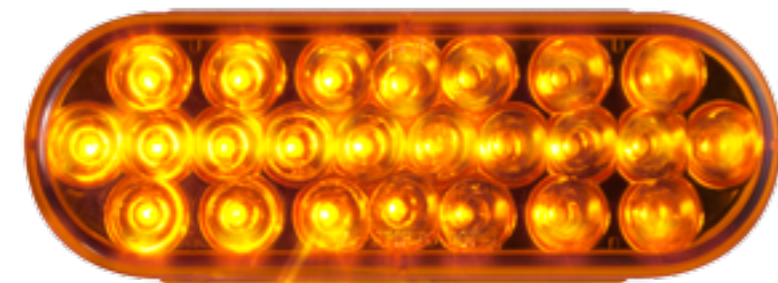
US01-40173



US01-40174



US01-40170



US01-62213



US01-62211



US01-62212



US01-62214



US01-62217



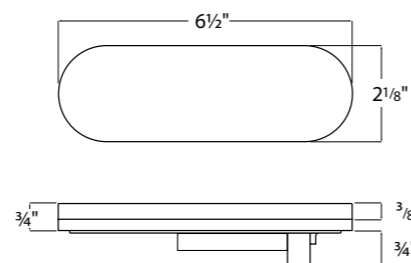
US01-62218



US01-62210

**Blu Design Lighting Series
6" Oval 24 LED STT Light**

- 6" Oval LED sonically sealed light
- 24 LED (amber, red, white or blue)
- Poly-Carbonate lens (clear or colored)
- Marker/Turn lamp
- 12v standard and 24v special order
- Uses standard 3-prong connection
- Meets or exceeds D.O.T standard



US01-60172



US01-60171



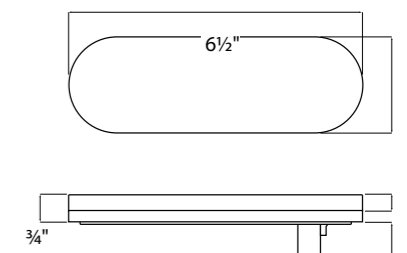
US01-60173



US01-60174

**Fleet Design Lighting Series
6" Oval 10 LED STT Light**

- 6" Oval LED sonically sealed light
- 10 LED (amber, red or white)
- Poly-Carbonate lens (clear or colored)
- Marker/Turn lamp
- Voltage: 12v
- Uses standard 3-prong connection
- Meets or exceeds D.O.T standard



All parts supplied are USA STAR. Use of other manufacturer's names, part numbers, or trademarks are for informational and identification purposes only.

All parts supplied are USA STAR. Use of other manufacturer's names, part numbers, or trademarks are for informational and identification purposes only.



US01-25161

**Star Design Lighting Series
2.5" Round 4 LED Marker Light**

- 2.5" Round LED sonically sealed light
- 4 LED (amber, red, white, blue or green)
- Poly-Carbonate lens (clear or colored)
- Marker light
- Voltage: 12v
- Uses standard 2-prong connection
- Meets or exceeds D.O.T standard



US01-25162



US01-25163



US01-25164



US01-25167



US01-25169



US01-20161

**Star Design Lighting Series
2" Round 3 LED Marker Light**

- 2" Round LED sonically sealed light
- 3 LED (amber, red, white, blue or green)
- Poly-Carbonate lens (clear or colored)
- Marker light
- Voltage: 12v
- Uses standard 2-prong connection
- Meets or exceeds D.O.T standard



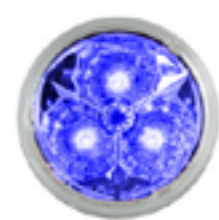
US01-20162



US01-20163



US01-20164



US01-20167



US01-20169



US01-20160



12v: US01-52162 (2 PRONG)
12v: US01-53162 (3 PRONG)
24v: US01-54162 (2 PRONG)

**Star Design Lighting Series
5" Oval 4 LED Marker Light**

- 5" Oval LED sonically sealed light
- 4 LED (amber, red, white, blue or green)
- Poly-Carbonate lens (clear or colored)
- Flush Mounting Marker light
- Stainless steel bezel and hardware included.
- 12v standard and 24v special order
- Available in 2 or 3 prong connection
- Meets or exceeds D.O.T standard



12v: US01-52161 (2 PRONG)
12v: US01-53161 (3 PRONG)
24v: US01-54161 (2 PRONG)



12v: US01-52163 (2 PRONG)
12v: US01-53163 (3 PRONG)
24v: US01-54163 (2 PRONG)



12v: US01-52164 (2 PRONG)
12v: US01-53164 (3 PRONG)
24v: US01-54164 (2 PRONG)



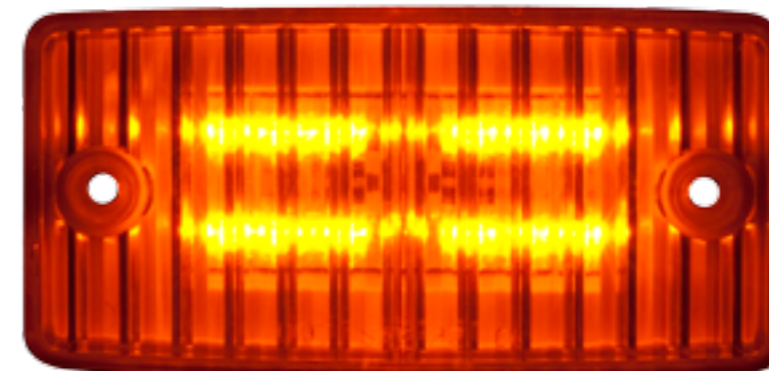
12v: US01-52160 (2 PRONG)
12v: US01-53160 (3 PRONG)
24v: US01-54160 (2 PRONG)



12v: US01-52167 (2 PRONG)
24v: US01-54167 (2 PRONG)



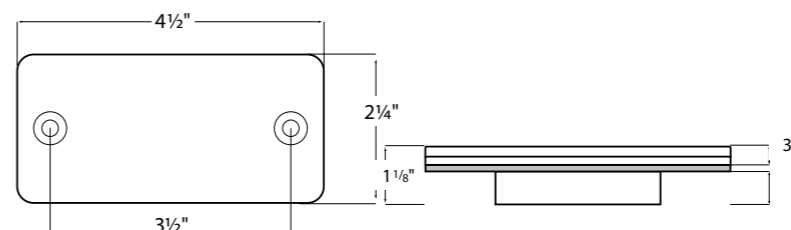
12v: US01-52169 (2 PRONG)



US01-48203

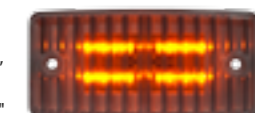
**Fleet Design Lighting
Series 4" Square Cab
Marker 12 LED**

- 4" Square sonically sealed light
- 12 LED amber
- Poly-Carbonate lens (clear or colored)
- Marker light with connector included
- Voltage: 12v
- Uses standard 3-prong connection
- Fits Freightliner & International Cabs
- Meets or exceeds D.O.T standard



CLEAR LENS

BACK



US01-48204



CLEAR LENSES
12v: US01-82196
24v: US01-84196



COLORED LENSES
12v: US01-82195
24v: US01-84195



MOUNTING
HARDWARE



CLEAR LENSES



AMBER SIDE



RED SIDE



AMBER SIDE



RED SIDE



CHROME VISOR
FACE UP
(accessorie not included)
View in p.31

CHROME VISOR
FACE DOWN
(accessorie not included)
View in p.31



Star Design Lighting Series 4" Round 50 LED Double Face Light

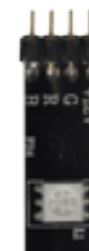
- 4" Round LED sonically sealed light
- 50 LED amber and red
- Poly-Carbonate lens (clear or colored)
- Marker or turn light
- 12v standard and 24v special order
- Uses standard 3-prong connection
- Meets or exceeds D.O.T standard



Split LED Light Strip

- Sold by meters (5 meters per roll).
1 meter = 39 inches.
- All LED light strips include 3m back tape. Just peel, stick and power.
- Can be cut every 3 LEDs.

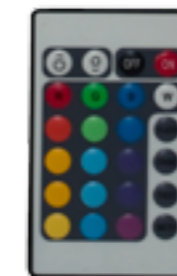
- US01-101210:
WHITE (5PCS OF 1METER PER ROLL)
- US01-101212:
RED (5PCS OF 1METER PER ROLL)
- US01-101214:
AMBER (5PCS OF 1METER PER ROLL)
- US01-101217:
BLUE (5PCS OF 1METER PER ROLL)
- US01-101218:
MULTICOLOR (5PCS OF 1METER PER ROLL)



SPLIT LED LIGHT
STRIP CONNECTION
(Every one meter)



CONNECTION
CABLES



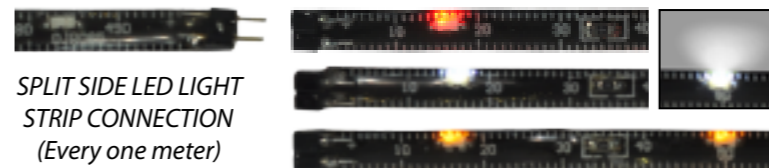
US01-10128C

Remote Control for LED Strip Lights

- To use with strip US01-101218 for changing colors.
- Remote control sells separately.



LED LIGHT
STRIP ROLL



SPLIT SIDE LED LIGHT
STRIP CONNECTION
(Every one meter)

Split Side LED Light Strip

- Sold by meters (5 meters per roll)

- US01-101220:
WHITE (5PCS OF 1METER PER ROLL)
- US01-101222:
RED (5PCS OF 1METER PER ROLL)
- US01-101224:
AMBER (5PCS OF 1METER PER ROLL)

Honeycomb Lighting Series LED Side Turn Light (Fits FL Century)



US01-46013
(Amber Lens,
Chrome Reflector)

US01-46014
(Clear Lens,
Chrome Reflector)

US01-46018
(Clear Lens,
Black Reflector)



US05-4600
TURN SIGNAL BULB CONNECTOR
(NOT INCLUDED)

Honeycomb Lighting Series LED Running Light (Fits FL Century)



US01-46003
(Amber Lens,
Chrome Reflector)

US01-46004
(Clear Lens,
Chrome Reflector)

US01-46008
(Clear Lens, Black
Reflector)



US05-4600
TURN SIGNAL BULB CONNECTOR
(NOT INCLUDED)



Century Headlight Cover with Lights

- Fits all Freightliner Century headlight covers.
- 37 amber LEDs
- Poly-carbonate lens

- Ultra-sonically sealed
- Wire harness connects into base to protect connections
- Meets or exceeds D.O.T standard



BACK VIEW

All parts supplied are USA STAR. Use of other manufacturer's names, part numbers, or trademarks are for informational and identification purposes only.

- Fits new Freightliner Century headlight covers.
- 37 amber LEDs
- Poly-carbonate lens

- Ultra-sonically sealed
- Wire harness connects into base to protect connections
- Meets or exceeds D.O.T standard



BACK VIEW

All parts supplied are USA STAR. Use of other manufacturer's names, part numbers, or trademarks are for informational and identification purposes only.



US00-4602R
PASSENGER SIDE

US00-4602L
DRIVER SIDE

Side Marker Light for Freightliner FLD120

- Fits Freightliner FLD120 models
- Side marker lamp unit
- Aftermarket replacement



US00-9201R
PASSENGER SIDE

US00-9201L
DRIVER SIDE

Side Marker Lamp for Volvo VNL & VNM

- Fits Volvo VNL & VNM models from 1996 to 2003
- Side marker lamp unit
- Aftermarket replacement



US00-6201R
PASSENGER SIDE

US00-6201L
DRIVER SIDE

Side Marker Light for Mack CH

- Fits Mack CH models
- Side marker lamp unit
- Aftermarket replacement



US53-5601R
PASSENGER SIDE

US53-5601L
DRIVER SIDE

Rear Marker, Stop and Back Up Light for Isuzu NPR, NRR, FRR & FSR

- Fits Isuzu NPR, NRR, FRR & FSR
- Tail lamp assembly
- Aftermarket replacement



US02-40550
PAIR OF LEFT & RIGHT HEADLIGHT

Projector Headlights Replacement for FLD120

- Fits Freightliner FLD120 models
- 9005 & 9006 Halogen bulbs included
- Halogen headlight (hi-beam, low-beam)
- Sold in pairs



US05-0233
HIGH BEAM CONVERSION KIT
(NOT INCLUDED)



US05-4600
TURN SIGNAL BULB CONNECTOR
(NOT INCLUDED)



BACK VIEW



US02-4612R
PASSENGER SIDE

US02-4612L
DRIVER SIDE

Headlight Replacement for FLD120

- Fits Freightliner FLD120 models
- Aftermarket replacement
- See ABS chrome bezels on page 65



US02-4605R
PASSENGER SIDE

US02-4605L
DRIVER SIDE



Headlights Replacement for Freightliner M2

- Fits Freightliner M2 models
- 9005 & 9006 Halogen bulbs included
- Halogen headlights (hi-beam, low-beam)
- Park and turn indicator



US02-4603R
PASSENGER SIDE

US02-4603L
DRIVER SIDE



US02-4602R
PASSENGER SIDE

US02-4602L
DRIVER SIDE

Projector Headlights Replacement for Freightliner Columbia

- Fits Freightliner Columbia models
- Black Reflector
- 9005 & 9006 Halogen bulbs included
- Halogen headlight (hi -beam, low -beam)
- Park and turn indicator
- Aftermarket replacement

Projector Headlights Replacement for Freightliner Columbia

- Fits Freightliner Columbia models
- Chrome Reflector
- 9005 & 9006 Halogen bulbs included
- Halogen headlight (hi -beam, low -beam)
- Park and turn indicator
- Aftermarket replacement



US02-55101
PASSENGER SIDE

US02-55102
DRIVER SIDE

Headlights Replacement for International WorkStar

- Fits International WorkStar models 2009 and up
- Park and turn indicator
- Headlight assembly

- ABS chrome bezel
- Grey reflector
- Aftermarket replacement



US02-9901R
PASSENGER SIDE

US02-9901L
DRIVER SIDE

Headlight Replacement for Freightliner, Kenworth & Peterbilt

- Fits Freightliner Classic, Kenworth T-600, T-800, C500, W900 & Peterbilt 379 models.
- Chrome bezel
- Aftermarket replacement



US02-5503

Headlights Replacement for International 9300 series

- Fits International 9300 models
- Grey ABS Plastic Bezel
- Can be used on the driver side & passenger side as well. Sold individually.
- Aftermarket replacement



US02-55103
PASSENGER SIDE



US02-55104
DRIVER SIDE

Headlights Replacement for International 5900 & 9200

- Fits International 5900 & 9200 models from 1994 to 2008.
- Headlight assembly

- Park and turn indicator
- Chrome Reflector
- Aftermarket replacement



US02-5501R
PASSENGER SIDE



US02-5501L
DRIVER SIDE

**Headlights Replacement for International
4000, 7000, 8500 & RXT**

- Fits International 4000, 7000, 8500
& RXT models 2008 and up.

- Park and turn indicator
- Aftermarket replacement



US02-9211R
PASSENGER SIDE



US02-9211L
DRIVER SIDE

**Headlight Replacement
for Volvo VNL & VNM**

- Fits Volvo VNL & VNM models from 1998 to 2002
- Aftermarket replacement



US02-9213R
PASSENGER SIDE



US02-9213L
DRIVER SIDE

**Fog Lamp for Volvo VN & VNL
Bumpers**

- Fits Volvo VN & VNL models from 2003 & newer
- Fog lamp assembly with daytime running lamps
- Aftermarket replacement



US02-9212R
PASSENGER SIDE



US02-9212L
DRIVER SIDE

Headlights Replacement for Volvo WIA

- Fits Volvo White GMC
- Aftermarket replacement



US02-6204R
PASSENGER SIDE



US02-6204L
DRIVER SIDE

Headlights Replacement for Mack CH

- Fits Mack CH models
- Park and turn indicator
- ABS Chrome bezel
- Aftermarket replacement



US02-6203R
PASSENGER SIDE



US02-6203L
DRIVER SIDE

Headlights Replacement for Mack Vision CX

- Fits Mack Vision CX models
- Park and turn indicator
- Chrome Reflector
- Aftermarket replacement



7" Halogen Headlight w/ 34 White LEDs

- Clear glass lens
- Cast aluminum base
- Easily replaceable bulb
- H4/HB2/9003 bulb
- Meets or exceeds D.O.T standard

Part No. US02-13160



7" Halogen Headlight w/ 34 Amber LEDs

- Clear glass lens
- Cast aluminum base
- Easily replaceable bulb
- H4/HB2/9003 bulb
- Meets or exceeds D.O.T standard

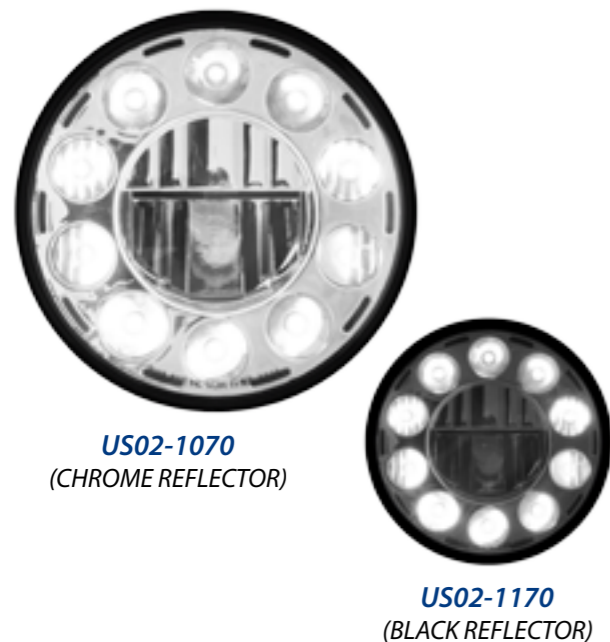
Part No. US02-13164



7" Halogen Headlight Star Series

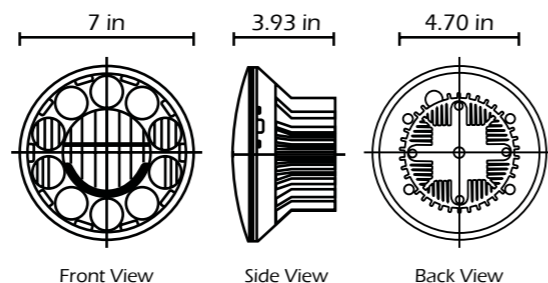
- Clear glass lens
- Cast aluminum base
- Easily replaceable bulb
- H4/HB2/9003 bulb
- Meets or exceeds D.O.T standard

Part No. US02-2210S



7" LED High / Low Beam Headlight (Black / Chrome Reflector)

- Aluminum heatsink as housing
- Polycarbonate lens
- Built-in driver
- High beam / low beam
- Universal replacement for H4/HB2
- Meets or exceeds D.O.T standard



7" Regular Headlight Kit for Freightliner Century

- Fits Freightliner Century models 2002 & older
- Clear glass lens
- High beam / low beam
- Aftermarket replacement
- Meets or exceeds D.O.T standard

Part No. US02-4609L / US02-4609R



Halogen Headlights Star Series

- Clear glass lens, cast aluminum base.
- Includes H4/HB2/9003 bulb (easily replaceable)
- Fits International trucks
- Meets or exceeds D.O.T standard

Part No. US02-2212S



4"x 6" Halogen Headlight Star Series

- Clear glass lens, cast aluminum base.
- Includes 9007/HB5 bulb and adapter
- Universal replacement for H4656 & H4651
- Meets or exceeds D.O.T standard

Part No. US02-2211S



US02-1010 (HIGH BEAM)

US02-1020 (LOW BEAM)

LED Headlight w/ LED Position Lamp

- Dimensions: 6.5" (W) x 4.5" (H) x 3.25 (D)
- EMI and IP67 compliant. Built-in driver.
- Crystal glass lens, aluminum heatsink & ABS reflector (Black or Chrome).
- Universal replacement for H4656 & H4651
- Fits on Peterbilts, Kenworth, Freightliner, Western Star, Isuzu NPR and more...
- 10X brighter than halogen
- Meets or exceeds D.O.T standard

US02-1030 (HIGH BEAM)

US02-1040 (LOW BEAM)



4"x 6" Halogen Headlight w/ 9 LEDs - Star Series



US02-46564L (LOW BEAM)
US02-46564H (HIGH BEAM)



US02-46567L (LOW BEAM)
US02-46567H (HIGH BEAM)



US02-46560L (LOW BEAM)
US02-46560H (HIGH BEAM)



PLUG INCLUDED WITH LIGHT

- Dimensions: 6" (W) x 4" (H)
- Clear glass lens
- Cast aluminum base
- Includes adapter

- Easily replaceable bulb
- Universal replacement for H4656 & H4651.
- Meets or exceeds D.O.T standard

6 High Power LED Rectangular Work Light

US02-1100 / US02-1110

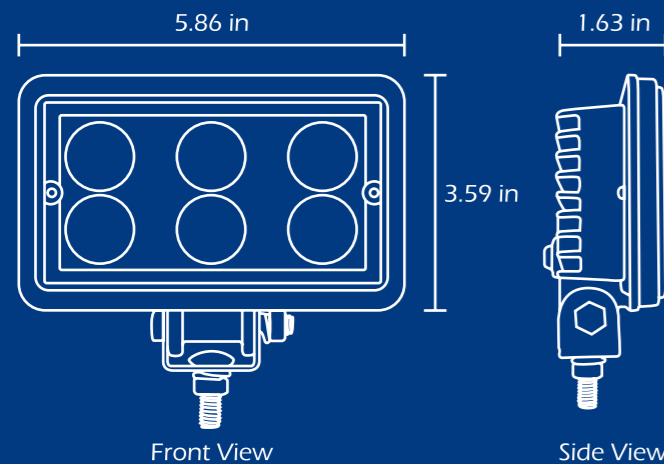


US02-1100

US02-1110

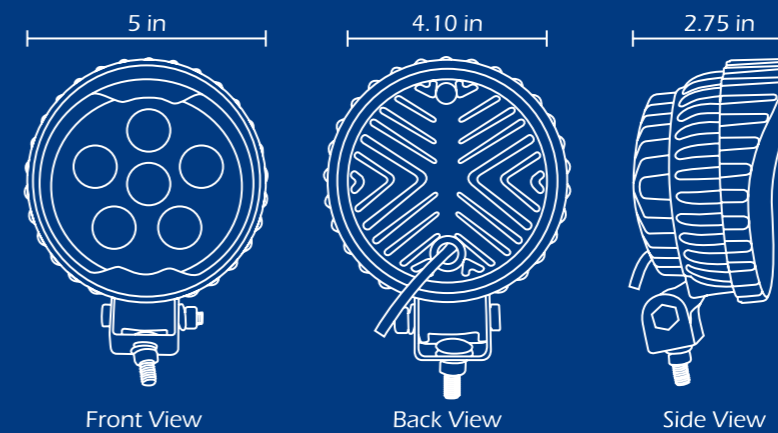
6 High Power LED 5" Round Work Light

US02-1090



DESCRIPTION

- Dimensions: 6" x 3 1/2"
- Polycarbonate lens, aluminum base.
- Work light of 6 LEDs
- High power 3 watt LEDs
- Hardware included
- Multivoltage 12V / 24V
- Aprox. 1000 Lumens
- Light color: 6000 kelvin
- Meets or exceeds D.O.T. standard



DESCRIPTION

- Dimensions: 5"
- Polycarbonate lens, aluminum base.
- Work light of 6 LEDs
- High power 3 watt LEDs
- Hardware included
- Multivoltage 12V/24V
- Aprox. 1000 Lumens
- Light color: 6000 kelvin
- Meets or exceeds D.O.T. standard



US02-815C-C

5" Halogen Work Light Star Series

- Dimensions: 5" diameter x 4.25" (D)
- Clear glass lens
- Chromed hi-impact metal housing
- Includes H3 bulb
- Swivel mounting bracket
- Worklight or off-road use only



US02-814C-C

4" Halogen Work Light Star Series

- Dimensions: 3.46" diameter x 3.14" (D)
- Clear glass lens
- Chromed hi-impact metal housing
- Includes H3 bulb
- Swivel mounting bracket
- Worklight or off-road use only



US02-4606

Fog Light for Freightliner Bumpers

- Dimensions: 4 1/2" diameter
- Clear glass lens



US02-119

Halogen Dual Span Fog Lights Star Series

- Dimensions: 5.90" (W) x 2.36" (H) x 2.63" (D)
- Clear glass lens
- Black die cast aluminium housing
- Includes 2 H3 bulb and metal mounting bracket. (Simple installation).



US02-21

Halogen Fog Lights Star Series

- Dimensions: 2.36" (W) x 1.57" (H) x 2.67" (D)
- Clear glass lens
- Black die cast aluminium housing
- Includes H3 bulb and metal mounting bracket. (Simple installation).



US02-1182

Halogen Foglamp Star Series

- Dimensions: 6.61" (W) x 4.33" (H) x 3.54" (D)
- Clear glass lens, hi-impact chrome
- Metal housing
- Includes H3 bulb
- Swivel mounting bracket
- Fits Kenworth bumpers



**Strobe Beacon
Low Profile**

- Amber strobe
- Voltage 10V - 16V DC
- Polycarbonate lens and outer dome
- Dimensions: 3 1/2" (H) x 5 1/16" (dia.)

Part No. US04-2103

MADE IN USA 



**Strobe High Profile
Heavy Duty**

- Amber lens, clear dome
- Quadflash
- Voltage 12V - 24V dc
- Polycarbonate lens and outer dome
- Dimensions: 7 3/4" (H) x 9" (diameter)

Part No. US04-2004

MADE IN USA 



**Strobe Beacon
Low Profile**

- Clear strobe
- Voltage 10V - 16V DC
- Polycarbonate lens and outer dome
- Dimensions: 3 1/2" (H) x 5 1/16" (dia.)

Part No. US04-2100

MADE IN USA 



**LED Strobe
Heavy Duty**

- Clear lens, clear dome
- Voltage 12V - 24V dc
- Polycarbonate lens and outer dome
- Dimensions: 7 3/4" (H) x 9" (diameter)

Part No. US04-2010

MADE IN USA 



**Strobe High Profile
Heavy Duty**

- Clear lens, clear dome
- Quadflash
- Voltage 12V - 24V DC
- Polycarbonate lens and outer dome
- Dimensions: 7 3/4" (H) x 9" (diameter)

Part No. US04-2000

MADE IN USA 



**LED Strobe
Heavy Duty**

- Amber lens, clear dome
- Voltage 12V - 24V dc
- Polycarbonate lens and outer dome
- Dimensions: 7 3/4" (H) x 9" (diameter)

Part No. US04-2014

MADE IN USA 



**White & Red LED
Emergency Light**

- Clear lens, clear dome
- White & red LEDs
- Voltage 12V - 24V dc
- Polycarbonate lens and outer dome
- Dimensions: 7 3/4" (H) x 9" (diameter)

Part No. US04-20102

MADE IN USA 



**White & Amber LED
Emergency Light**

- Clear lens, clear dome
- White & amber LEDs
- Voltage 12V - 24V dc
- Polycarbonate lens and outer dome
- Dimensions: 7 3/4" (H) x 9" (diameter)

Part No. US04-20104

MADE IN USA 



**Red & Amber LED
Emergency Light**

- Clear lens, clear dome
- Red & amber LEDs
- Voltage 12V - 24V dc
- Polycarbonate lens and outer dome
- Dimensions: 7 3/4" (H) x 9" (diameter)

Part No. US04-20124

MADE IN USA 



US04-9114
(CLEAR LENS, AMBER LEDS)

US04-9110
(CLEAR LENS, WHITE LEDS)



US04-9113 (AMBER LENS, AMBER LEDS)



Safety LED Light Bar

- Full 360° LED light
- Low profile minibar
- Voltage 12V - 24V DC
- Reflective technology
- 18 flash patterns
- Dimensions: 3" (H) x 16 1/2" (L) x 8 3/8" (D)
- Super Bright
- Hardware included
- Permanent mount. Magnetic mount (special order).

US04-91104
(CLEAR LENS, AMBER & WHITE LEDS)

US04-91124
(CLEAR LENS, AMBER & RED LEDS)
[SPECIAL ORDER]

US04-91102
(CLEAR LENS, WHITE & RED LEDS)
[SPECIAL ORDER]



BUSHING AND BOLT
FOR INSTALLATION

MADE IN USA 



BACK VIEW - PERMANENT MOUNT



MAGNETIC MOUNT [SPECIAL ORDER]



CIGARETTE PLUG
[SPECIAL ORDER]

4" Stainless Steel Safety Light Bezel

US05-4301



DESCRIPTION

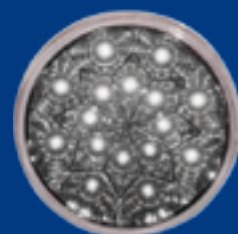
- Material: Stainless steel
- Dimensions: 4 inches internal diameter.
- Holds LED light in place
- Fits all USA STAR 4" LED lights
- Security system of 6 clips that protects light against theft.



BACK VIEW

LIGHTING OPTIONS

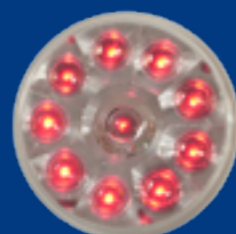
(Not included with bezel)



Model
US01-4216X

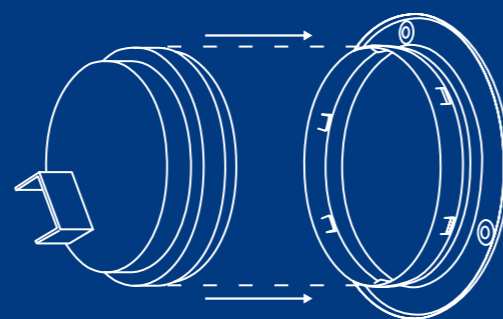


Model
US01-4221X



Model
US01-4217X

ASSEMBLY GRAPHIC



All parts supplied are USA STAR. Use of other manufacturer's names, part numbers, or trademarks are for informational and identification purposes only.



US05-82191

Chrome Visor Face UP

Fits double faced Star Series LED lights



US05-82192

Chrome Visor Face Down

Fits double faced Star Series LED lights



US05-4300

4" SS Light Bezel

Standard bezel for LED lights. Holds LED lights in place. Light mounts from the front.



US05-6300

6" Stainless Steel Light Bezel



US05-6301

6" Stainless Steel Safety Light Bezel

Safety bezel for LED lights. Holds light in place. Security system of clips that protects light against theft.



US05-4701

4" Round & 6" Oval Rubber Light Grommet

Universal rubber grommets for LED lights. Holds LED lights in place.



US05-6701



US05-902
6" CABLES



US05-903
2" CABLES

2 pin & 3 Pin Light Connector

All parts supplied are USA STAR. Use of other manufacturer's names, part numbers, or trademarks are for informational and identification purposes only.



US02-H4SW
90 / 100W



US02-9007SW
80 / 100W

Halogen Replacement Bulbs Star Series

- Super white light
- Easy fit bulb
- Fits all H4 lights
- Sold in pairs
- Meets or exceeds D.O.T standard



US01-STROBE

Strobe Adapter 12v

- Strobe adapter
- Turns any LED light into a single pattern emergency.
- Signal light
- Can be use with multiple lights



12v: US83-0112
24v: US83-0124

Heavy Duty Back-Up Alarm

- 107 Decibels
- Single tone
- Die-Cast housing
- Long-Term reliability
- Convenient compact size
- Voltage: 12v or 24v

MADE IN USA



www.usastar.us

All parts supplied are USA STAR. Use of other manufacturer's names, part numbers, or trademarks are for informational and identification purposes only.

7" Aluminum Chrome Headlight Housing "Chopper Style" w/ Visor

US05-7901



ANGLED SIDE VIEW



TOP VIEW

Rib Housing Design

DESCRIPTION

- Material: Aluminum chrome
- Rib housing design
- Auto / Truck mount
- Dimensions: 10 in (length) x 7.5 in (diameter).
- Mounting diameter: 0.5 in.
- Fits all 7" headlights, models H6014 and H6024.
- Housing only. Lights and accessories sold separately.

USA STAR LIGHTING OPTIONS

(Not included with housing)



US02-13160



US02-13164



US02-2210s



US02-1070



US02-1170

HOUSING ACCESSORIES

(Not included with housing)

7" Housing Chrome Cover or Bezel



US05-7402 (Straight Lines)



US05-7401 (Curve Lines)





**Wings
Custom Steering Wheel**

- Custom 18" steering wheel
- Chrome steel and solid wood construction.
- Hub adapter included
- Horn connection cable included

Part No.
US09-468904: FITS FREIGHTLINER 1989+
US09-599704: FITS KENWORTH 1989-2003
US09-759804: FITS PETERBILT 1998+ AND KENWORTH 2004+



**Twins
Custom Steering Wheel**

- Custom 18" steering wheel
- Chrome steel and solid wood construction.
- Hub adapter included
- Horn connection cable included

Part No.
US09-468909: FITS FREIGHTLINER 1989+
US09-558909: FITS INTERNATIONAL 1989+



**Vibrant
Custom Steering Wheel**

- Custom 18" steering wheel
- Chrome steel and solid wood construction.
- Hub adapter included
- Horn connection cable included

Part No.
US09-468905: FITS FREIGHTLINER 1989+
US09-599705: FITS KENWORTH 1989-2003
US09-759805: FITS PETERBILT 1998+ AND KENWORTH 2004+



**All Wood
Custom Steering Wheel**

- Custom 18" steering wheel
- Chrome steel and solid wood construction.
- Hub adapter included
- Horn connection cable included

Part No.
US09-468903: FITS FREIGHTLINER 1989+
US09-599703: FITS KENWORTH 1989-2003
US09-759803: FITS PETERBILT 1998+ AND KENWORTH 2004+



**Triple Looper
Custom Steering Wheel**

- Custom 18" steering wheel
- Chrome steel and solid wood construction.
- Hub adapter included
- Horn connection cable included

Part No.
US09-468907: FITS FREIGHTLINER 1989+
US09-599707: FITS KENWORTH 1989-2003
US09-759307: FITS PETERBILT 1993-97
US09-759807: FITS PETERBILT 1998+ AND KENWORTH 2004+



**Classic 4 Spoke
Custom Steering Wheel**

- Custom 18" steering wheel
- Chrome steel and solid wood construction.
- Hub adapter included
- Horn connection cable included

Part No.
US09-468901: FITS FREIGHTLINER 1989+
US09-599701: FITS KENWORTH 1989-2003
US09-759801: FITS PETERBILT 1998+ AND KENWORTH 2004+



**Flames
Custom Steering Wheel**

- Custom 18" steering wheel
- Chrome steel and solid wood construction.
- Hub adapter included
- Horn connection cable included

Part No.
US09-558908: FITS FREIGHTLINER 1989+
US09-468908: FITS KENWORTH 1989-2003
US09-590408: FITS KENWORTH 2004+
US09-759308: FITS PETERBILT 1993-97



**Classic 2 Spoke
Custom Steering Wheel**

- Custom 18" steering wheel
- Chrome steel and solid wood construction.
- Hub adapter included
- Horn connection cable included

Part No.
US09-468902: FITS FREIGHTLINER 1989+
US09-599702: FITS KENWORTH 1989-2003
US09-759802: FITS PETERBILT 1998+ AND KENWORTH 2004+



US14-99100 (24" LENGHT)
US14-99200 (30" LENGHT)

Black Universal Quilted Gear Shift Cover



US14-99102 (24" LENGHT)
US14-99202 (30" LENGHT)

Blue Universal Quilted Gear Shift Cover



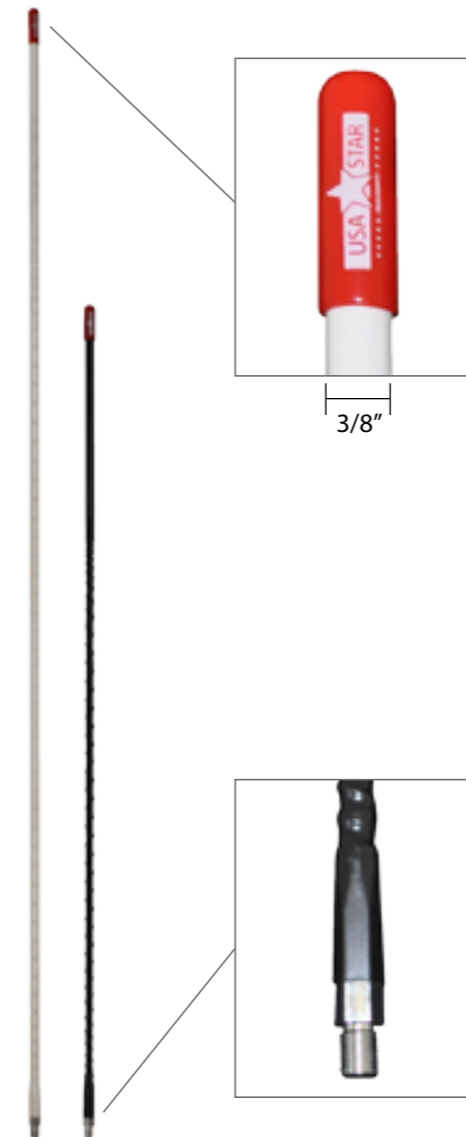
US14-99101 (24" LENGHT)

Gray Universal Quilted Gear Shift Cover



US14-99103 (24" LENGHT)
US14-99203 (30" LENGHT)

Wine Universal Quilted Gear Shift Cover



Whip Fiberglass Antenna

- Standard 3/8" (diameter) x 24 STUD mounting

- Part No.**
 US82-11001 - 3 FEET WHITE
 US82-11002 - 3 FEET BLACK
 US82-11003 - 4 FEET WHITE
 US82-11004 - 4 FEET BLACK



Double Coiled Antenna Chrome

- Frequency coverage: 26-29 MHz
- 15,000 watts power capability for 10 & 11 meter.
- High efficiency open helix coil
- Provides optimum lenght to Diameter radio
- 5" (12.7cm) whip adjustment for SWR 1.5 or less.
- Standard 3/8" (diameter) x 24 STUD mounting
- Best quality in the market

Part No. US82-2000



US27-11001 (KIT WITH 10 SCREW ON LUG NUT COVERS)

**Front Axle Cover Kit
Star Series**

- ABS chrome front axle cover kit
- With "easy-lift" removable hub cap
- Includes 10 screw-in 33mm lug nut covers.
- Fits 22.5/24.5 American wheels (10 hole)



US27-12001 (KIT WITH 10 SCREW ON LUG NUT COVERS)

**Rear Axle Cover Kit
Star Series**

- ABS chrome rear axle cover kit
- With "easy-lift" removable hub cap
- Includes 10 screw-in 33mm lug nut covers.
- Fits 22.5/24.5 American wheels (10 hole)



US27-11000 (KIT WITH 10 SCREW ON 33mm LUG NUT COVERS)
US27-11010 (KIT WITH 10 PUSH ON 33mm LUG NUT COVERS)
US27-11040 (KIT WITH 10 PUSH ON 1.5" LUG NUT COVERS)

**Standard Front Axle Cover
Kit - Fleet Series**

- ABS chrome front axle cover kit
- With "easy-lift" removable hub cap
- Includes 10 lug nut covers
- Fits 22.5/24.5 American wheels (10 hole)



US27-12000 (KIT WITH 10 SCREW ON 33mm LUG NUT COVERS)
US27-12010 (KIT WITH 10 PUSH ON 33mm LUG NUT COVERS)
US27-12040 (KIT WITH 10 PUSH ON 1.5" LUG NUT COVERS)

**Standard Rear Axle Cover
Kit - Fleet Series**

- ABS chrome rear axle cover kit
- With "easy-lift" removable hub cap
- Includes 10 lug nut covers
- Fits 22.5/24.5 American wheels (10 hole)

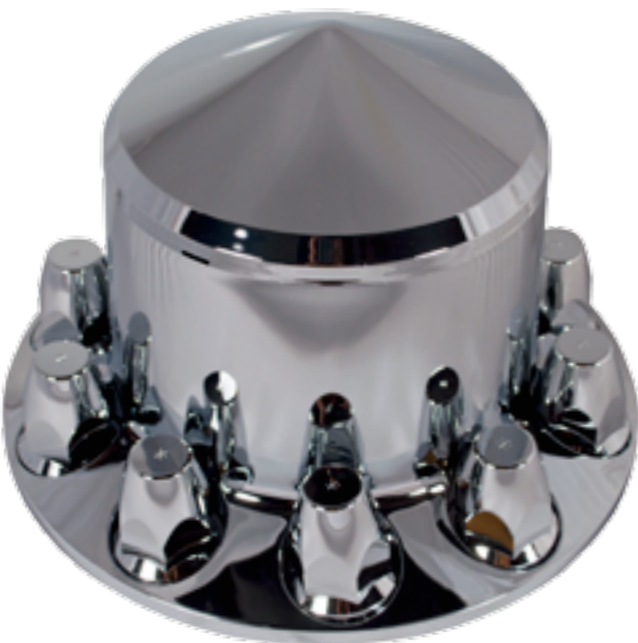




Cone Front Axle Cover Kit Fleet Series

- ABS chrome front axle cover kit
- With "easy-lift" removable hub cap
- Includes 10 lug nut covers
- Fits 22.5/24.5 American wheels (10 hole)

US27-11002 (KIT WITH 10 SCREW ON 33mm LUG NUT COVERS)
 US27-11012 (KIT WITH 10 PUSH ON 33mm LUG NUT COVERS)
 US27-11042 (KIT WITH 10 PUSH ON 1.5" LUG NUT COVERS)



Cone Rear Axle Cover Kit Fleet Series

- ABS chrome rear axle cover kit
- With "easy-lift" removable hub cap
- Includes 10 lug nut covers
- Fits 22.5/24.5 American wheels (10 hole)

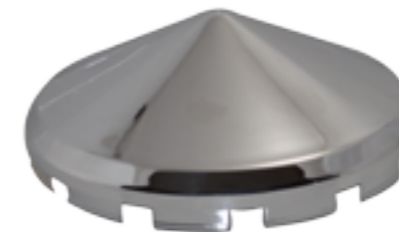
US27-12002 (KIT WITH 10 SCREW ON 33mm LUG NUT COVERS)
 US27-12012 (KIT WITH 10 PUSH ON 33mm LUG NUT COVERS)
 US27-12042 (KIT WITH 10 PUSH ON 1.5" LUG NUT COVERS)



US27-11300

Front Standard Hub Cap Replacement

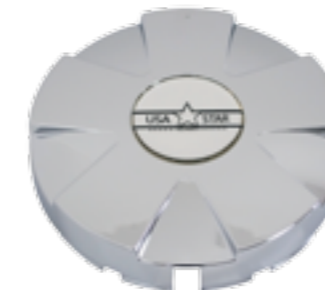
- ABS chrome center axle cover
- Replacement hub cap
- Fits US27-11000, US27-11010 and US27-11040



US27-11302

Front Cone Hub Cap Replacement

- ABS chrome center axle cover
- Replacement hub cap
- Fits US27-11002, US27-11012 and US27-11042.



US27-11301

Front Star Hub Cap Replacement

- ABS chrome center axle cover
- Replacement hub cap
- Fits US27-11001



US27-1111
Screw in Chrome Plastic

33mm lug nut covers



US27-1114
Push in Chrome Plastic

1.5" lug nut covers



US27-1112
Push in Chrome Plastic

33mm lug nut covers



US27-1113
Screw in Chrome Plastic

33mm lug nut covers



US27-9901
Lug Nut Removal Tool

For all USA STAR axle covers



US27-41001

Universal Chrome Front Standard Hub Cap 7/16" Short Lip for Steel Wheels

- Material: Steel chrome
- Universal front hub cap with six 7/16" notches and four clips.
- Fits 20", 22.5" and 24.5" wheel with 8-23/32" diameter center hole. Also fits all 4, 5, 6 uneven notch hubs, except all 6 even.



US27-41002

Universal Chrome Front Standard Hub Cap 1" Long Lip for Aluminum Wheel

- Material: Steel chrome
- Universal front hub cap with six 1" notches and four clips.
- Fits 20", 22.5" and 24.5" wheel with 8-23/32" diameter center hole. Also fits all 4, 5, 6 uneven notch hubs, except all 6 even.



US27-42001

Universal Chrome Rear Standard Hub Cap of 8" Diameter x 2-3/4" High

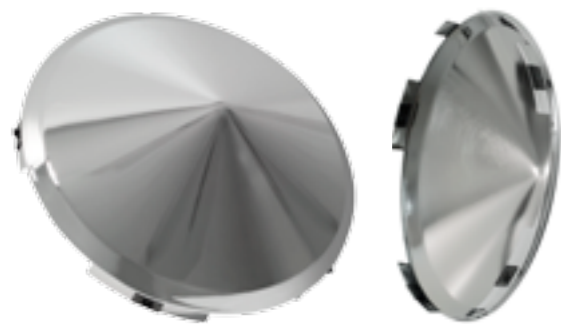
- Material: Steel chrome
- Universal rear standard hub cap of 8" diameter
- Fits 8-1/2" diameter axle, 8 of 5/8" studs.
- Also fits Peterbilt, Kenworth, FTL 1995 & up.



US27-42002

Universal Chrome Rear Standard Hub Cap of 8-1/4" Diameter x 2-3/4" High

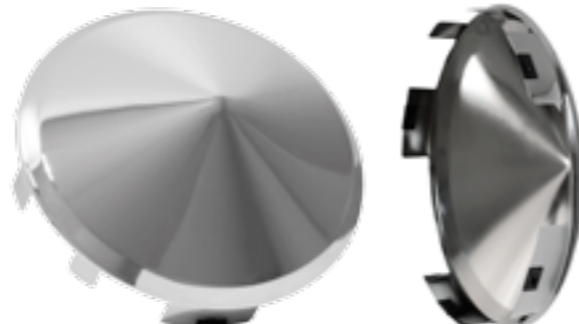
- Material: Steel chrome
- Universal rear standard hub cap of 8 1/4" dia.
- Fits 8-1/2" diameter axle, 8 of 3/4" studs.
- Fits International trucks



US27-41201

Universal Chrome Front Cone Hub Cap 7/16" Short Lip for Steel Wheel

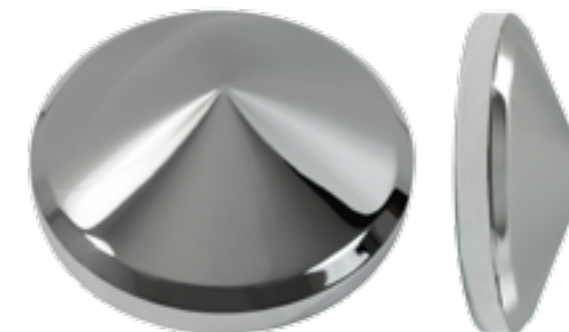
- Material: Steel chrome
- Universal front hub cap with six 7/16" notches and four clips.
- Fits 20", 22.5" and 24.5" wheel with 8-23/32" diameter center hole. Also fits all 4, 5, 6 uneven notch hubs, except all 6 even.



US27-41202

Universal Chrome Front Cone Hub Cap 1" Long Lip for Aluminum Wheel

- Material: Steel chrome
- Universal front hub cap with six 1" notches and four clips.
- Fits 20", 22.5" and 24.5" wheel with 8-23/32" diameter center hole. Also fits all 4, 5, 6 uneven notch hubs, except all 6 even.



US27-42201

Universal Chrome Rear Cone Hub Cap of 8" Diameter x 3-3/8" High

- Material: Steel chrome
- Universal rear cone hub cap of 8" diameter
- Fits 8-1/2" diameter axle, 8 of 5/8" studs.
- Also fits Peterbilt, Kenworth, FTL 1995 & up.



US27-42202

Universal Chrome Rear Cone Hub Cap of 8-1/4" Diameter x 3-3/8" High

- Material: Steel chrome
- Universal rear cone hub cap of 8 1/4" diameter
- Fits 8-1/2" diameter axle, 8 of 3/4" studs.
- Fits International trucks



US27-44202 (SET OF 3 PCS.)

Chrome Rear Axle Cover - 3 pc Set w/ Cone Hub Cap (for Aluminum Wheel w/ 1-1/2" lug nuts)

- Material: Steel chrome
- Universal rear axle cover
- Includes 9-1/2" (H) hat, 8-1/2" cone hub cap and a ring with 5 large / 5 small holes.
- Fits 20", 22.5" & 24.5" aluminum wheels with 1 1/2" lug nuts (american wheels).



BEAUTY RING
US27-45002



US27-44004 (SET OF 2 PCS.)

Chrome Std Round Rear Axle Cover - 2 pc Set (for Steel & Aluminum Wheel)

- Material: Steel chrome
- Universal rear axle cover
- Includes 19 gauge steel 9-1/2" (H) hat and a ring with 5 large / 5 small holes.
- Fits 20", 22.5" & 24.5" wheel (american wheels).



BEAUTY RING
US27-45001



US27-44204 (SET OF 3 PCS.)

Chrome Rear Axle Cover - 3 pc Set w/ Cone Hub Cap (for Aluminum Wheel w/ 33mm lug nuts)

- Material: Steel chrome
- Universal rear axle cover
- Includes 9-1/2" (H) hat, 8-1/2" cone hub cap and a ring with 10 small holes.
- Fits 20", 22.5" & 24.5" aluminum wheels with 33mm lug nuts (american wheels).



BEAUTY RING
US27-45004



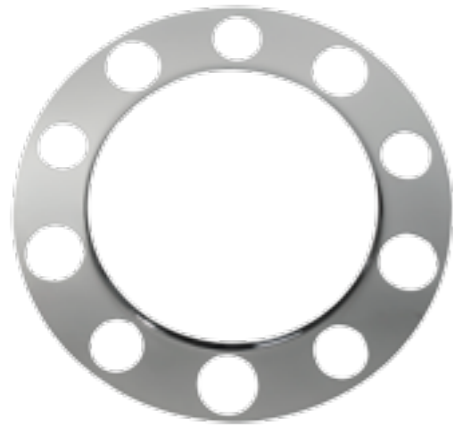
US27-44005 (SET OF 2 PCS.)

Chrome Std Round Rear Axle Cover - 2 pc Set (for Aluminum Wheel w/ 1-1/2" lug nuts)

- Material: Steel chrome
- Universal rear axle cover
- Includes 19 gauge steel 9-1/2" (H) hat and a ring with 5 large / 5 small holes.
- Fits 20", 22.5" & 24.5" aluminum wheels with 1 1/2" lug nuts (american wheels).



BEAUTY RING
US27-45002



10 Holes Chrome Beauty Ring for Steel & Aluminum Wheels

- Material: 15 gauge steel chrome
- 5 large holes of 1 3/4" (44mm) & 5 small holes of 1 9/16" (40mm) holes for mounting.
- For steel & aluminum wheels

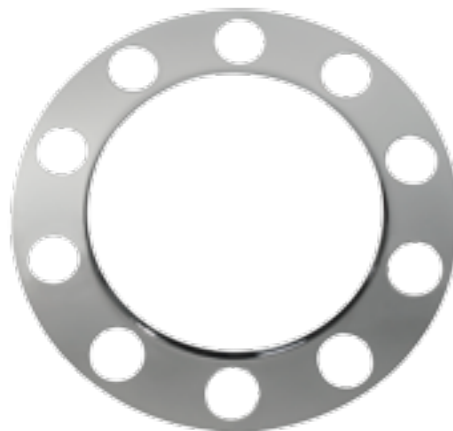
Part No. US27-45001



10 Holes Chrome Beauty Ring for Aluminum Wheels w/ 1-1/2" lugs

- Material: 15 gauge steel chrome
- 5 large holes of 1 3/4" (44mm) & 5 small holes of 1 9/16" (40mm) holes for mounting.
- For aluminum wheels with 1 1/2" lugs only

Part No. US27-45002



10 Holes Chrome Beauty Ring for Aluminum Wheels w/ 33mm lugs

- Material: 15 gauge steel chrome
- 10 small holes for mounting of 1 1/4" (32mm)
- For aluminum wheels with 33mm lugs

Part No. US27-45004

16" Round Wheel Cover (2 front, 2 rear) Kit

- Material: Stainless steel
- Set includes 2 front, 2 rear wheel covers and lug nut covers.
- Plain design on hat (rear cover)

Part No. US27-5630 (FOR ISUZU - 6 HOLES) [PICTURE SHOWN]
US27-9030 (FOR TOYOTA COASTER - 5 HOLES)



FRONT WHEEL COVER

REAR WHEEL COVER



REAR WHEEL COVER

FRONT WHEEL COVER

16" Wheel Cover Kit w/ Windows on Rear High Hat (2 front, 2 rear)

- Material: Stainless steel
- Set includes 2 front, 2 rear wheel covers and lug nut covers.
- Window design on hat (rear cover)

Part No. US27-9031 (FOR TOYOTA COASTER - 5 HOLES) [PICTURE SHOWN]
US27-5631 (FOR ISUZU - 6 HOLES)



WINDOWS



**6" Stainless Steel Convex Mirror
Center Mount**

- Material: Stainless steel
- Type: 6" convex mirror
- Mount: Center
- "X" back design

Part No. US10-1301



**8" Stainless Steel Convex Mirror
Center Mount**

- Material: Stainless steel
- Type: 8" convex mirror
- Mount: Center
- Water drain holes
- Concave back design

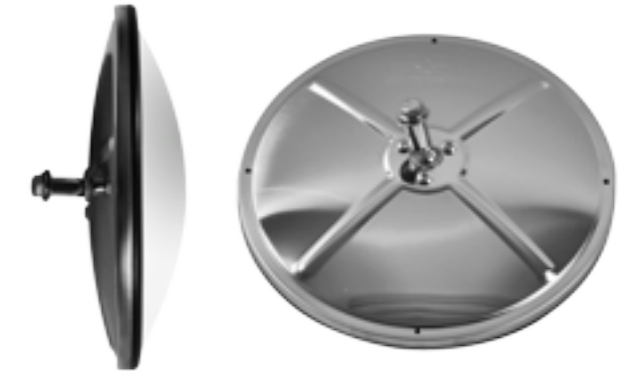
Part No. US10-1302



**8" Stainless Steel Convex Mirror
Offset Mount**

- Material: Stainless steel
- Type: 8" convex mirror
- Mount: Offset
- Water drain holes
- Concave back design

Part No. US10-1305



**8" Stainless Steel Bubble Convex
Mirror Center Mount**

- Material: Stainless steel
- Type: 8" bubble convex mirror
- Mount: Center
- Water drain holes
- "X" back design

Part No. US10-1306



**8" Stainless Steel Convex Mirror
Center Mount**

- Material: Stainless steel
- Type: 8" convex mirror
- Mount: Center
- Water drain holes
- "X" back design

Part No. US10-1303



**8" Stainless Steel Convex Mirror
Offset Mount**

- Material: Stainless steel
- Type: 8" convex mirror
- Mount: Offset
- Water drain holes
- Conical back design

Part No. US10-1304



**8" Stainless Steel Convex Mirror
w/ Marker & Turn Signal LEDs**

- 8" Stainless steel convex mirror
- Mount: Offset
- Marker and turn signal LEDs (amber lens, amber LEDs). Polycarbonate lens.
- 3 prongs
- **Passenger side**

Part No. US10-13113



**8" Stainless Steel Convex Mirror
w/ Marker & Turn Signal LEDs**

- 8" Stainless steel convex mirror
- Mount: Offset
- Marker and turn signal LEDs (amber lens, amber LEDs). Polycarbonate lens.
- 3 prongs
- **Driver side**

Part No. US10-13123



8" Stainless Steel Convex Mirror w/ Marker & Turn Signal LEDs

- 8" Stainless steel convex mirror
- Mount: Offset
- Marker and turn signal LEDs (clear lens, amber LEDs). Polycarbonate lens.
- 3 prongs
- **Passenger side**

Part No. US10-13114



8" Stainless Steel Convex Mirror w/ Marker & Turn Signal LEDs

- 8" Stainless steel convex mirror
- Mount: Offset
- Marker and turn signal LEDs (clear lens, amber LEDs). Polycarbonate lens.
- 3 prongs
- **Driver side**

Part No. US10-13124



Stainless Steel Convex Mirror Above Door Mount

- Stainless steel 4" x 8" convex mirror
- Mounts above door for greater blind spot visibility.
- Used on heavy trucks for better viewing
- Includes mounting bracket

Part No. US10-2305



8" Stainless Steel Heated Convex Mirror w/ Marker & Turn Signal LEDs

- 8" Stainless steel convex mirror
- Mount: Offset
- Marker and turn signal LEDs (amber lens, amber LEDs). Polycarbonate lens.
- Heating system, 4 prongs
- **Passenger side**

Part No. US10-13143



8" Stainless Steel Heated Convex Mirror w/ Marker & Turn Signal LEDs

- 8" Stainless steel convex mirror
- Mount: Offset
- Marker and turn signal LEDs (amber lens, amber LEDs). Polycarbonate lens.
- Heating system, 4 prongs
- **Driver side**

Part No. US10-13133



6"x16" Aluminum West Coast Style Mirror

- Material: Aluminum
- Type: West coast style mirror
- Dimensions: 6"x16"
- Angle back square corner
- Flat mirror

Part No. US10-2101



6"x16" Stainless Steel West Coast Style Mirror

- Material: Stainless steel
- Type: West coast style mirror
- Dimensions: 6"x16"
- Angle back square corner
- Flat mirror

Part No. US10-2302



6"x16" Aluminum Mirror with Convex End

- Material: Aluminum
- Type: West coast style mirror
- Dimensions: 6"x16"
- Angle back square corner
- Split mirror with convex end

Part No. US10-2102

6"x16" Stainless Steel Mirror with Convex End

- Material: Stainless steel
- Type: West coast style mirror
- Dimensions: 6"x16"
- Angle back square corner
- Split mirror with convex end

Part No. US10-2301

7"x16" Stainless Steel West Coast Mirror (Bubble Back Design)

- Material: Stainless steel
- Type: West coast style mirror
- Dimensions: 7"x16"
- Bubble back design
- Flat mirror with round corners

Part No. US10-2303

7"x16" Stainless Steel West Coast Mirror

- Material: Stainless steel
- Type: West coast style mirror
- Dimensions: 7"x16"
- Angle back square corner
- Flat mirror with round corners

Part No. US10-2304



BACK VIEW

FRONT VIEW

7"x16" Stainless Steel Mirror with LED Light (Amber Lens - Amber LED)

- Material: Stainless steel
- Type: West coast style mirror
- Dimensions: 7"x16"
- Angle back square corner
- Flat mirror with round corners
- LED light (amber lens, amber LED).
- Polycarbonate lens

Part No. US10-23113



BACK VIEW

FRONT VIEW

7"x16" Stainless Steel Mirror with LED Light (Clear Lens - Amber LED)

- Material: Stainless steel
- Type: West coast style mirror
- Dimensions: 7"x16"
- Angle back square corner
- Flat mirror with round corners
- LED light (clear lens, amber LED)
- Polycarbonate lens

Part No. US10-23114



FRONT VIEW

BACK VIEW

Stainless Steel Mirror Tripod Fender System

- Material: Stainless steel
- Type: 8" convex mirror
- Adjustable tripod fender system
- Mirror with water drain holes

Part No. US10-3301



STRAIGHT EXTENSION

CURVED EXTENSION

BUBBLE CONVEX MIRROR

Stainless Steel Mirror Pod Mount w/ Straight & Curved Extension

- Material: Stainless steel
- Type: 8" bubble convex mirror
- Pod Mount
- Mirror with water drain holes
- Curved and straight adaptable extensions

Part No. US10-3302

Arm Extension for Round Convex Mirrors

Arm extends forward from existing mirror bracket to view blind spot through front window. Attaches to existing bracket, no holes to drill. Stainless Steel Extension.

Part No. US10-4301





*US16-9200
PASSENGER SIDE*



*US16-9201
DRIVER SIDE*

**Mirror Covers Star Series
for Volvo**

- ABS chrome mirror covers
- Fits most Volvo trucks
- Each side sold separately
- Aftermarket replacement



www.usastar.us

All parts supplied are USA STAR. Use of other manufacturer's names, part numbers, or trademarks are for informational and identification purposes only.



*US16-4600
PASSENGER SIDE*



*US16-4601
DRIVER SIDE*

**Headlight Bezels Star Series
for Freightliner Century**

- ABS chrome headlight covers
- Fits Freightliner Century models
- Each side sold separately
- Aftermarket replacement



*US16-4606
PASSENGER SIDE*



*US16-4607
DRIVER SIDE*

**Headlight Bezels
for Freightliner Columbia**

- ABS chrome headlight covers
- Fits Freightliner Columbia models
- Each side sold separately
- Aftermarket replacement



www.usastar.us

All parts supplied are USA STAR. Use of other manufacturer's names, part numbers, or trademarks are for informational and identification purposes only.



Headlamp Bezels for Freightliner M2

- Fits only Freightliner M2 with bezel from factory.
- ABS chrome headlight covers

- Each side sold separately
- Aftermarket replacement



US16-5501R
PASSENGER SIDE

US16-5501L
DRIVER SIDE

Headlight Bezel for International

- Fits International 3800, 4700, 4800, 4900, 8100 & 8200 from 1995 to 2004.
- ABS chrome headlight covers

- Each side sold separately
- Aftermarket replacement



Headlight Bezel with Side Market Light for Freightliner FLD120

- Fits Freightliner FLD120 models 1989 to 2002
- ABS chrome headlight bezels
- Side marker light included

- Each side sold separately
- Aftermarket replacement



US16-46005R
PASSENGER SIDE

US16-46005L
DRIVER SIDE

Headlight Bezel for Freightliner FLD120

- Fits Freightliner FLD120 models 1990 to 2002
- ABS chrome headlight covers

- Each side sold separately
- Aftermarket replacement

Aftermarket "Mesh Style" Grille for Freightliner Century

US18-466301



DESCRIPTION

- Fits all Freightliner Century models
- Aftermarket grille mesh style
- No assembly required
- With bugscreen
- High impact ABS
- 4 bushings needed for installation (not included). [US37-1800 See on page 70]

**Patented
Design**

"See how it looks"
in cover and page 62

All parts supplied are USA STAR. Use of other manufacturer's names, part numbers, or trademarks are for informational and identification purposes only.



Freightliner Century Aftermarket Grille

- Fits all Freightliner Century models
- Aftermarket grille regular style
- No assembly required
- With bugscreen
- High impact ABS
- 4 bushings needed for installation (not included). [US37-1800 See on page 70]

Part No. US18-466300



Freightliner Columbia Aftermarket Grille

- Fits all Freightliner Columbia models
- Aftermarket grille mesh style
- No assembly required
- High impact ABS
- 4 bushings needed for installation (not included). [US37-1800 See on page 70]

Part No. US18-466401



Freightliner Columbia Aftermarket Grille

- Fits all Freightliner Columbia models
- Aftermarket grille regular style
- No assembly required
- With bugscreen
- High impact ABS
- 4 bushings needed for installation (not included). [US37-1800 See on page 70]

Part No. US18-466400

All parts supplied are USA STAR. Use of other manufacturer's names, part numbers, or trademarks are for informational and identification purposes only.



**Freightliner Cascadia
Aftermarket Grille**

- Fits Freightliner Cascadia models
- Aftermarket grille regular style
- No assembly required
- With bugscreen
- High impact ABS

Part No. US18-466500



**Mack Vision CX
Aftermarket Grille**

- Fits Mack Vision CX models
- Aftermarket grille regular style
- No assembly required
- With bugscreen
- High impact ABS

Part No. US18-626100



**Freightliner M2
Aftermarket Grille**

- Fits Freightliner M2 models
- Aftermarket grille regular style
- No assembly required
- With bugscreen
- High impact ABS

Part No. US18-466600



**Volvo VNL 2003+
Aftermarket Grille**

- Fits Volvo VNL models 2003+
- Aftermarket grille regular style
- No assembly required
- High impact ABS

Part No. US18-926800
Part No. US18-926808 (CHROME ABS)

Limited Quantity Available



**Grille Frame (Surround)
for Freightliner M2**

- Fits only Freightliner M2 models with surround from factory.
- Aftermarket grille frame replacement (regular style) with bugscreen.
- No assembly required
- High impact ABS

Part No. US16-466607



**Volvo VNL 1997- 2002
Aftermarket Grille**

- Fits Volvo VNL models 1997-2002
- Aftermarket grille regular style
- No assembly required
- High impact ABS

Part No. US18-926700



US01-46024 - AMBER LED



US01-46022 - RED LED



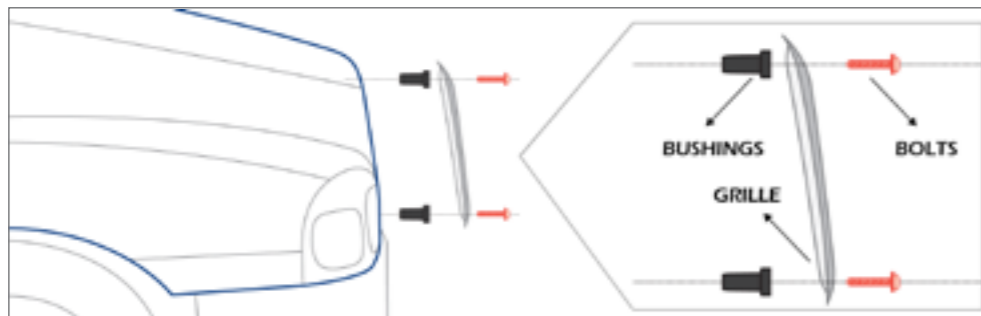
US01-46020 - WHITE LED

USA Star Logo Light for Freightliner Grilles

- 21 SMD LEDs.
- New shock proof technology.
- High impact quality lens.
- Mounting bolts with hardware included.
- Mounting bolts are positioned to fit into Freightliner grille.



Bushing Kit for Freightliner Century & Columbia Grilles



US37-1800



- Fits Freightliner Century & Columbia models
- Use 4 per grille
- Sold individually
- Bolt & washer included



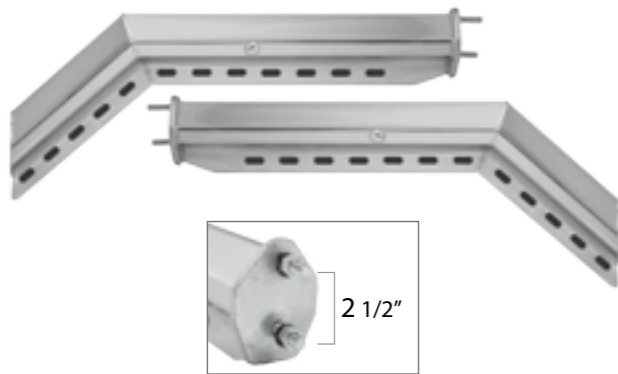
www.usastar.us



30" Straight Chrome Mud Flap Hanger

- Material: Chrome
- 2 1/2" Bolt spacing. Length: 30"
- Mud flap mounting bolts included
- Spring loaded

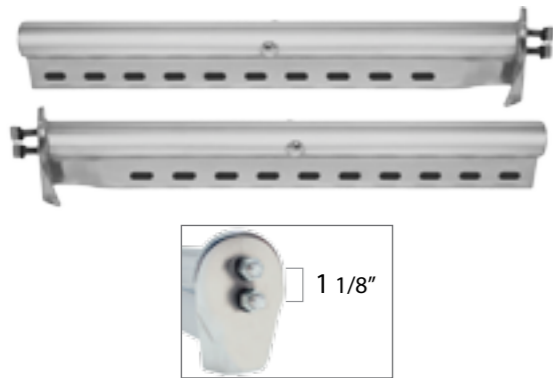
Part No. US53-1400



45° Angled Chrome Mud Flap Hanger

- Material: Chrome
- 2 1/2" Bolt spacing. Length: 30"
- Mud flap mounting bolts included
- Spring loaded
- Sold in pairs

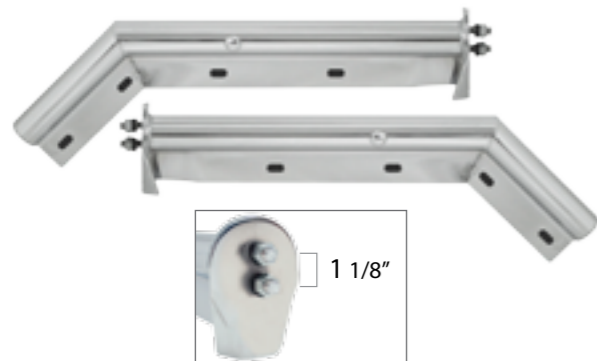
Part No. US53-1401



30" Straight Chrome Mud Flap Hanger

- Material: Chrome
- 1 1/8" Bolt spacing. Length: 30"
- Mud flap mounting bolts included
- Spring loaded
- Sold in pairs

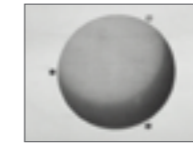
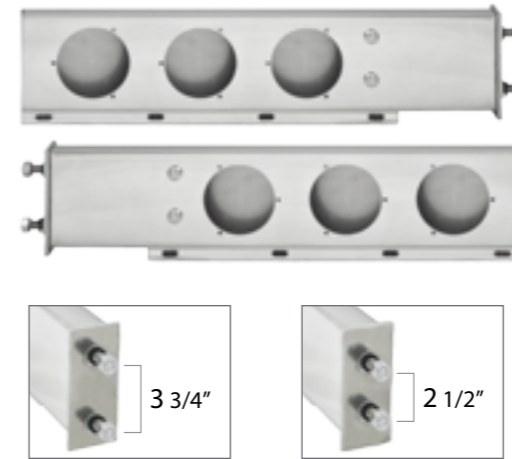
Part No. US53-1402



45° Angled Chrome Mud Flap Hanger

- Material: Chrome
- 1 1/8" Bolt spacing. Length: 27"
- Mud flap mounting bolts included
- Spring loaded

Part No. US53-1403



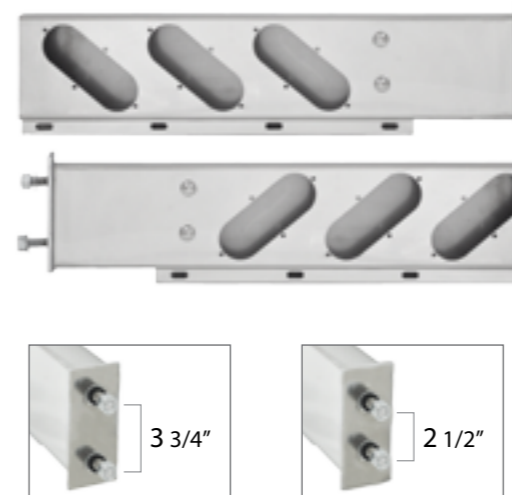
MOUNTING HOLES FOR BOLTS

Stainless Steel Mud Flap Hanger w/ 4" Light Holes

- Material: Stainless steel 304 (mirror finish).
- Length: 30"
- Spring loaded.
- Three 4" round light cutouts, mounting holes for lighting accessories.
- Sold in pairs

US53-2300
3 3/4" BOLT SPACING

US53-2303
2 1/2" BOLT SPACING



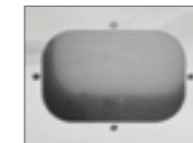
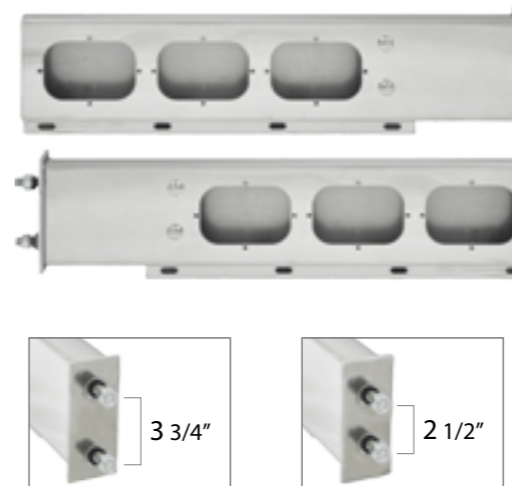
MOUNTING HOLES FOR BOLTS

Stainless Steel Mud Flap Hanger w/ 6" Oval Light Holes

- Material: Stainless steel 304 (mirror finish).
- Length: 30"
- Spring loaded.
- Three 6" oval light cutouts, mounting holes for lighting accessories.
- Sold in pairs

US53-2301
3 3/4" BOLT SPACING

US53-2304
2 1/2" BOLT SPACING



MOUNTING HOLES FOR BOLTS

Stainless Steel Mud Flap Hanger w/ Rectangular Light Holes

- Material: Stainless steel 304 (mirror finish).
- Length: 30"
- Spring loaded.
- Three rectangular light cutouts, mounting holes for lighting accessories.
- Sold in pairs

US53-2302
3 3/4" BOLT SPACING

US53-2305
2 1/2" BOLT SPACING



Top Mud Flap Plain Plate w/ 4 Holes

Part No. US53-64100 (CHROME)
Part No. US53-63100 (STAINLESS STEEL 304)

- Dimensions: 24" (width) x 2" (height)
- Top plate for mud flap
- Material: Chrome or stainless steel 304
- Plain design
- **Heavy Duty**



Top Mud Flap Louvered Plate w/ 4 Holes

Part No. US53-64101 (CHROME)
Part No. US53-63101 (STAINLESS STEEL 304)

- Dimensions: 24" (width) x 2" (height)
- Top plate for mud flap
- Material: Chrome or stainless steel 304
- Louvered design



24"x5" Bottom Mud Flap Louvered Plate w/ V Bend

Part No. US53-64201 (CHROME)
Part No. US53-63201 (STAINLESS STEEL 304)

- Dimensions: 24" (width) x 5" (height)
- Bottom plate for mud flap
- Material: Chrome or stainless steel 304
- Louvered design with lip

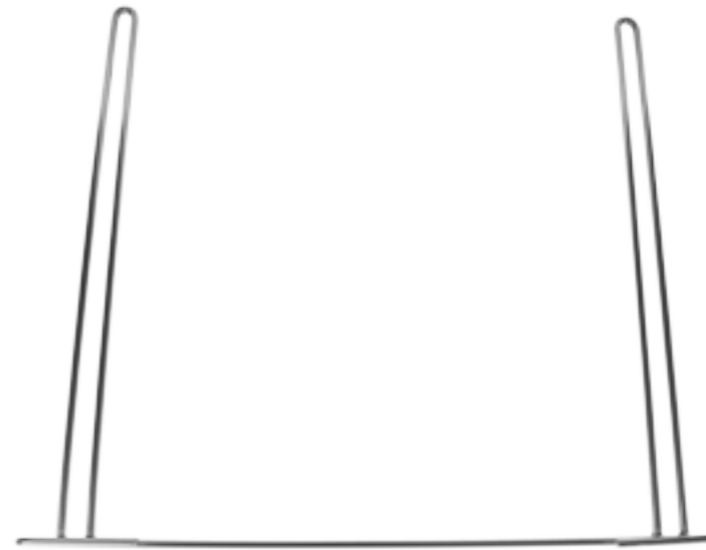


24"x4" Bottom Mud Flap Plain Plate w/ 3 Holes

Part No. US53-64202 (CHROME)
Part No. US53-63200 (STAINLESS STEEL 304)

- Dimensions: 24" (width) x 4" (height)
- Bottom plate for mud flap
- Material: Chrome or stainless steel 304
- Plain design
- **Heavy Duty**

All parts supplied are USA STAR. Use of other manufacturer's names, part numbers, or trademarks are for informational and identification purposes only.



24"x21" Chrome Anti-Sail Mud Flap Holders

- Dimensions: 24" (width) x 21" (height)
- Keeps mud flap secure, reduce tear and wear.
- Material: Chrome

Part No. US53-64401



FRONT VIEW



SIDE VIEW

Stainless Steel Anti-Sail Plain Plate w/ Mounting Hardware

- Dimensions: 12" (upper width), 8 1/4" (lower width) x 16 1/4" (height).
- Prevent mud flap from whipping and sailing.
- Material: Stainless steel 304
- Plain design
- Sold in pairs

Part No. US53-63501



FRONT VIEW



SIDE VIEW

Stainless Steel Anti-Sail Louvered Plate w/ Mounting Hardware

- Dimensions: 12" (upper width), 8 1/4" (lower width) x 16 1/4" (height).
- Prevent mud flap from whipping and sailing.
- Material: Stainless steel 304
- Louvered design
- Sold in pairs

Part No. US53-63502

All parts supplied are USA STAR. Use of other manufacturer's names, part numbers, or trademarks are for informational and identification purposes only.



Quarter Fenders 24" x 29"

- Dimensions: 24" x 29"
- Mounting clamps, hardware and flaps included.
- Standard mount
- Material: Stainless steel 304
- Sold in pairs

Part No. US53-4320



US53-4330
(STANDARD MOUNT)

Quarter Fenders 24" x 24"

- Dimensions: 24" x 24"
- Mounting clamps, hardware and flaps included.
- Available in standard or low mount
- Low mount fits better on Volvo & Freightliners
- Material: Stainless steel
- Sold in pairs

MADE IN USA 

US53-4324
(LOW MOUNT)



US53-4624
(STANDARD MOUNT)

Quarter Fenders 24" x 24" Poly Kit w/ USA Star Logo Flap

- Dimensions: 24" x 24"
- Lightweight and durable
- Mounting clamps, hardware and flaps included.
- Available in standard or low mount
- Low mount fits better on Volvo & Freightliners
- Material: Polyethylene (plastic heavy duty).
- Sold in pairs

MADE IN USA 

US53-4625
(LOW MOUNT)

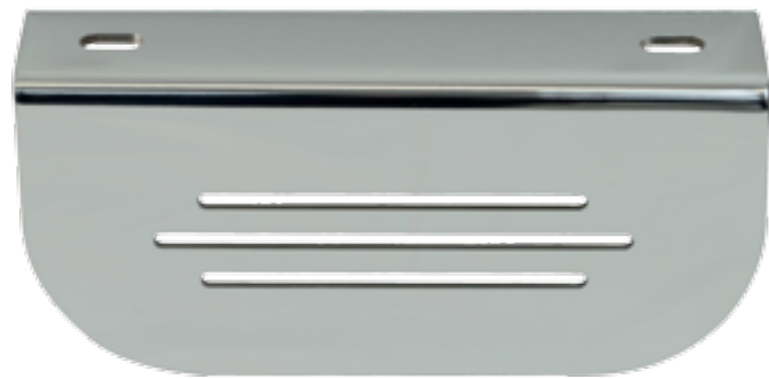


Mounting Bracket Base with Hardware (Bolt) for Quarter Fenders

- Length: 6" 1/8
- Sold individual.

Part No. US53-8001





Chrome Single L-Bracket

- Material: 10 gauge steel chromed
- Fits all 6" oval USA STAR LED lights
- Hardware included
- **Heavy Duty**

Part No. US53-5403

(LIGHT NOT INCLUDED)



BACK VIEW WITH LIGHT



BRACKET WITH LIGHT



ASSEMBLY



Chrome Double L-Bracket

- Material: 10 gauge steel chromed
- Fits all 6" oval USA STAR LED lights
- Hardware included
- **Heavy Duty**

Part No. US53-5404

(LIGHT NOT INCLUDED)



BACK VIEW



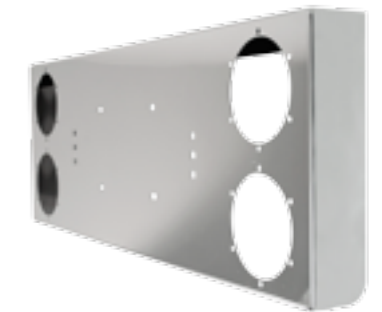
BRACKET WITH LIGHTS



Stainless Steel Rear Light Panel w/ Four 4" Light Holes & Plate Screws

- Material: Stainless steel
- Four 4" round light cutouts
- Pre-drilled holes for license plate frame & light
- Pre-drilled bolt holes for lighting accessories

Part No. US53-5301

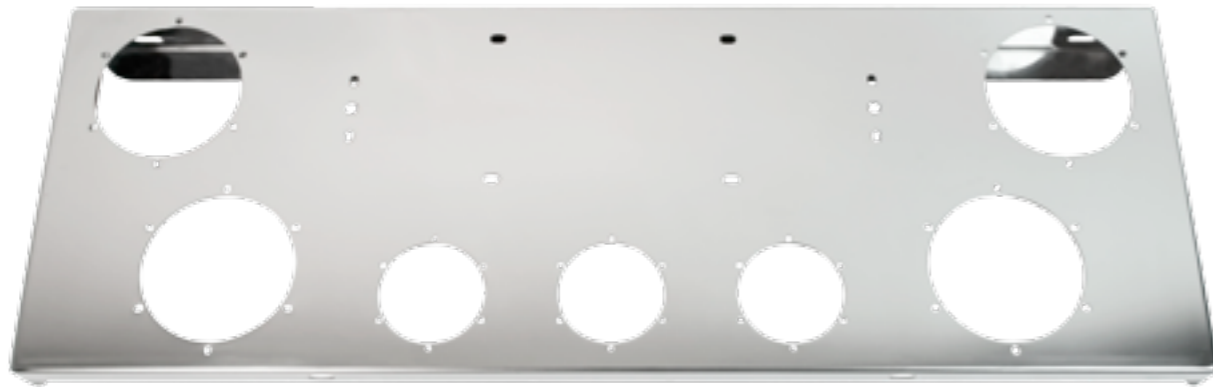


Stainless Steel Rear Light Panel w/ Four 4", Four 2" & USA STAR Logo Light Holes

- Material: Stainless steel
- Four 4" round & four 2" round light cutouts
- Holes for USA STAR logo light
- Pre-drilled bolt holes for lighting accessories

Part No. US53-5302

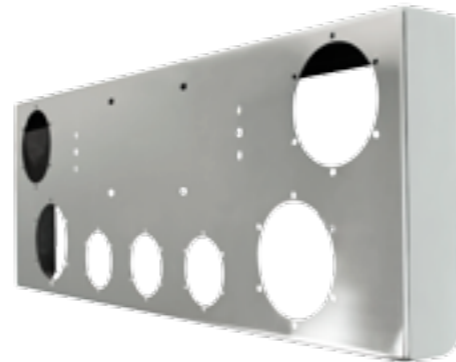




Stainless Steel Rear Light Panel w/ Four 4" & Three 2.5" Light Holes + Plate Holes

- Material: Stainless steel
- Four 4" round & three 2.5" round light cutouts
- Pre-drilled holes for license plate frame & light
- Pre-drilled bolt holes for lighting accessories

Part No. US53-5303



Stainless Steel Rear Light Panel w/ Four 4" & Six 2.5" Light Holes

- Material: Stainless steel
- Four 4" round & six 2.5" round light cutouts
- Pre-drilled bolt holes for lighting accessories

Part No. US53-5305



Stainless Steel Rear Light Panel w/ Six 4" Round Light Holes

- Material: Stainless steel
- Six 4" round light cutouts
- Pre-drilled bolt holes for lighting accessories

Part No. US53-5304



Stainless Steel Rear Light Panel w/ Four 6" & Two 4" Light Holes

- Material: Stainless steel
- Four 6" oval & two 4" round light cutouts
- Pre-drilled bolt holes for lighting accessories

Part No. US53-5306





Stainless Steel Rear Light Panel w/ Four 6", Three 2.5" Light Holes & Plate Holes

- Material: Stainless steel
- Four 6" oval & three 2.5" round light cutouts
- Pre-drilled holes for license plate frame & light
- Pre-drilled bolt holes for lighting accessories

Part No. US53-5307



Stainless Steel Rear Light Panel w/ Four 6" & Four 5" Light Holes

- Material: Stainless steel
- Four 6" oval & four 5" oval light cutouts
- Pre-drilled holes for license plate frame & light
- Pre-drilled bolt holes for lighting accessories

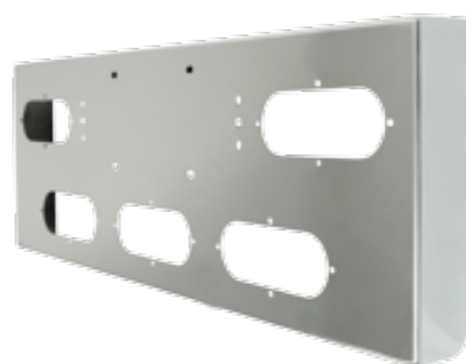
Part No. US53-5309



Stainless Steel Rear Light Panel w/ Five 6" Light Holes & Plate Holes

- Material: Stainless steel
- Five 6" oval light cutouts
- Pre-drilled holes for license plate frame & light
- Pre-drilled bolt holes for lighting accessories

Part No. US53-5308



Stainless Steel Rear Light Panel w/ Four 6", Four 5" & USA STAR Logo Light Holes

- Material: Stainless steel
- Four 6" oval & four 5" oval light cutouts
- USA STAR logo light cutouts
- Pre-drilled bolt holes for lighting accessories

Part No. US53-5310

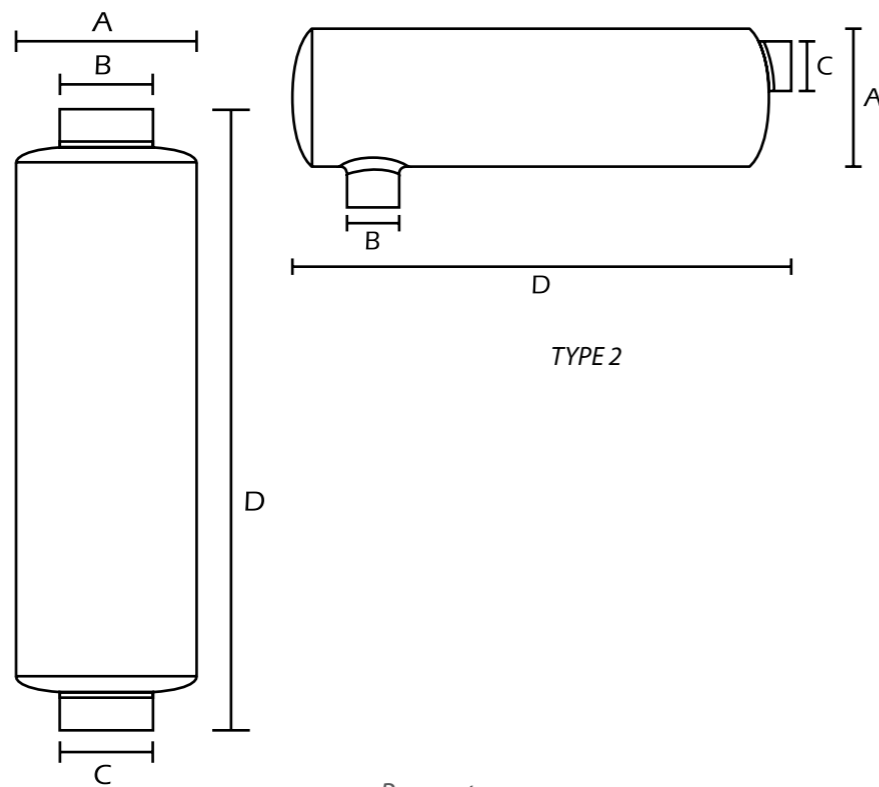




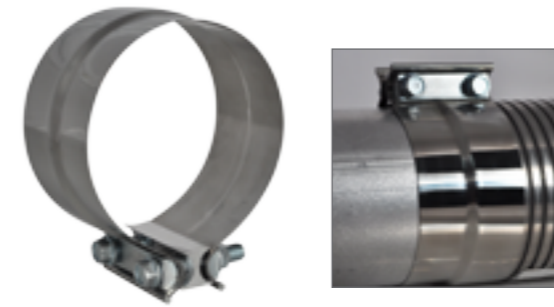
Mufflers & Resonators

Specifications

Part No.	Type	Diameter (A)	Inlet I.D. (B)	Outlet I.D. (C)	Overall Length (D)
US43-90781	1	9"	4"	5"	51"
* US43-90072	1	9"	5"	5"	16.50"
US43-90595	1	9"	5"	5"	26.50"
** US43-10465	1	10"	5"	5"	51"
*** US43-10582	1	10"	5"	5"	51"
US43-90823	2	9"	4"	5"	48"



- * Resonator
- ** Popular
- *** Heavy Duty Muffler for Electronic Engines



**4" Preformed Clamp
Stainless Steel 304**
Part No. US42-1314



**5" Preformed Clamp
Stainless Steel 304**
Part No. US42-1315



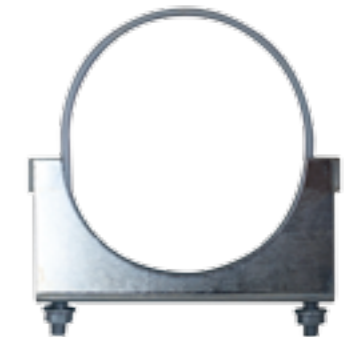
5" Stainless Steel Flat Band
Part No. US42-1325



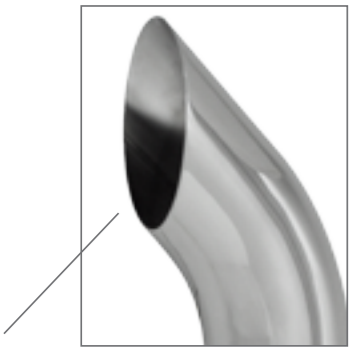
**5.88" Clamp for Turbo
Exhaust Connection**
Part No. US42-1335



5" Chrome Flat U-Bolt
Part No. US42-1445



5" Zinc Flat U-bolt
Part No. US42-1545



5" x 36" Chrome West Coast Style Stack

- Material: Chrome

Part No. US41-54136

5" x 48" Chrome West Coast Style Stack

- Material: Chrome

Part No. US41-54148

5" x 60" Chrome West Coast Style Stack

- Material: Chrome

Part No. US41-54160



All parts supplied are USA STAR. Use of other manufacturer's names, part numbers, or trademarks are for informational and identification purposes only.



www.usastar.us



US97-2001 - 1 GALLON
US97-2005 - 5 GALLONS
US97-2055 - 55 GALLONS

US97-1001 - 1 GALLON
US97-1005 - 5 GALLONS
US97-1055 - 55 GALLONS

US97-3001 - 1 GALLON
US97-3005 - 5 GALLONS
US97-3055 - 55 GALLONS

Degreaser

Safe on engine, wheels, chassis, fenders, auto body, tires, vinyl, machinery, floors and any dirty surface. Non-abrasive, biodegradable. One gallon, 5 & 55 gallons presentations.

Multi-Purpose Heavy Duty Cleaner

Concentrated soap multi-purpose cleaner. Safe on engine, wheels, chassis, fenders, auto body, tires, vinyl, machinery, floors and any dirty surface. Biodegradable, non-abrasive. One gallon, 5 & 55 gallons presentations.

Tire Shine

Protects and gives a superior shine to tires, adding sparkling final touch to your car or truck in just minutes. One gallon, 5 & 55 gallons presentations.



Metal Polish

USA STAR Metal Polish is a fast acting, easy to use metal polish ("easy on, easy off") designed to give the highest luster with the least amount of effort. Use only on: Aluminum, stainless steel, metal chrome, brass, silver and gold.

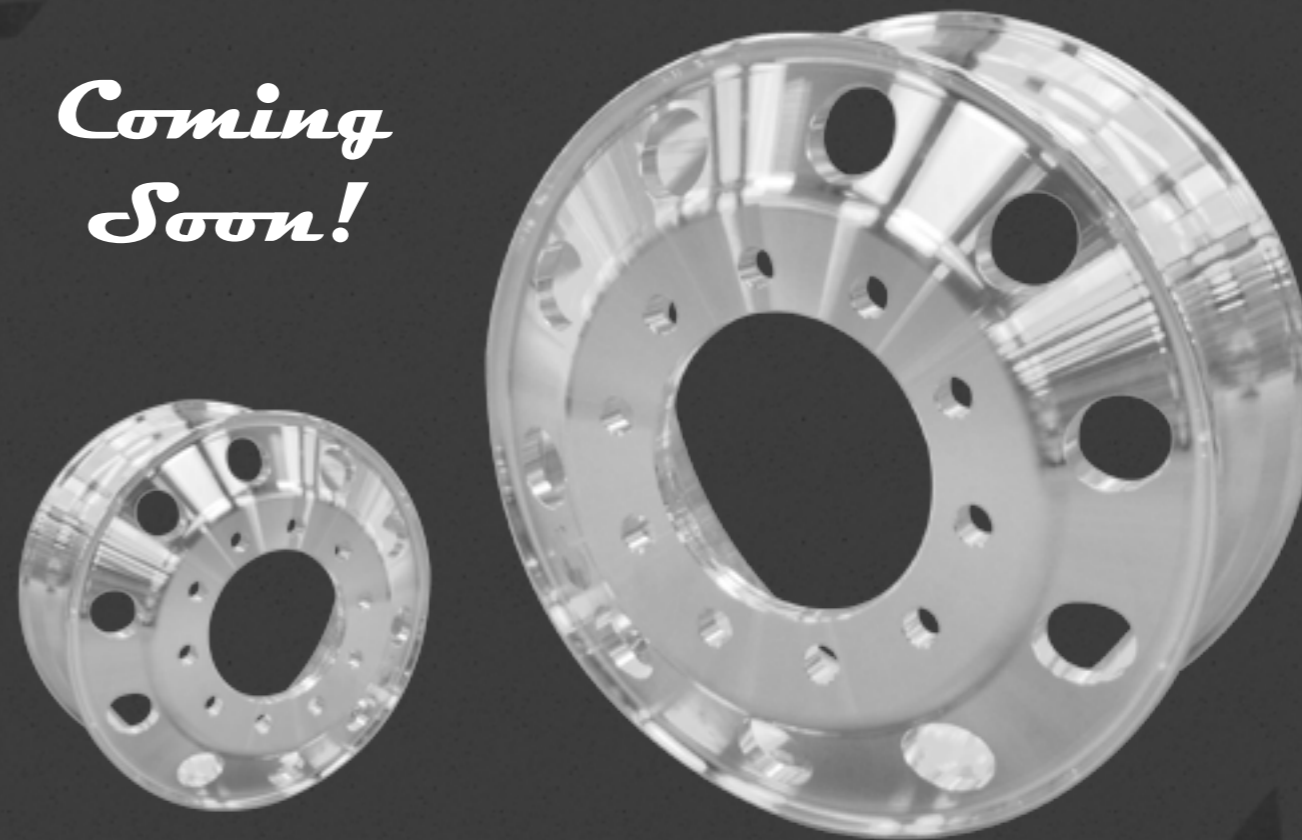
Part No. US97-4016 [16 OZ BOTTLE]



All parts supplied are USA STAR. Use of other manufacturer's names, part numbers, or trademarks are for informational and identification purposes only.

FORGED ALUMINUM WHEELS

Coming Soon!



MiamiStar.net

9795 N.W. 87TH Ave. Medley, FL 33178. USA.
PH: 1 (305) 888.8669

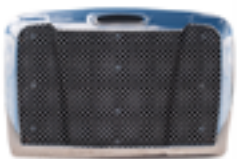
Authorized Distributors



Lighting, Stainless Steel & Chrome Accessories



*Mirrors &
Accessories*



*Collision
Parts*



*Chassis
Accessories*



Lighting



Specialty Truck Products